

# Alabama Student Information System Secure Access Solution

Paul Gibbs – Director, Engineering Services  
James Taylor – Director, Consulting Services

Feb. 16, 2011



# Are You Concerned About ...

- Student information being exposed to the Internet?
- Security issues related to web-based applications?
- All of the resources required to implement?





# Exposure To The Internet

- Student information systems contain large amounts of private information that must be protected from unauthorized access
- An effective secure access solution must provide a method that prevents direct access to systems that hold this information





# Security Issues With Web-based Applications

---

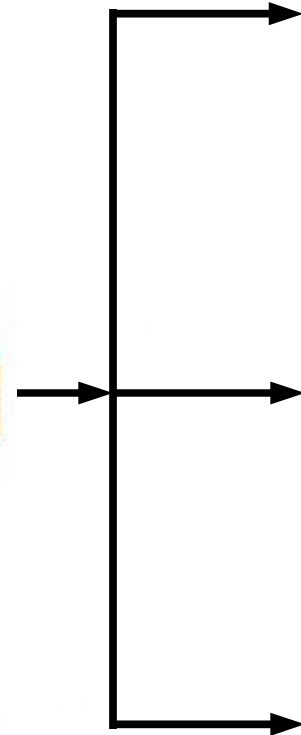
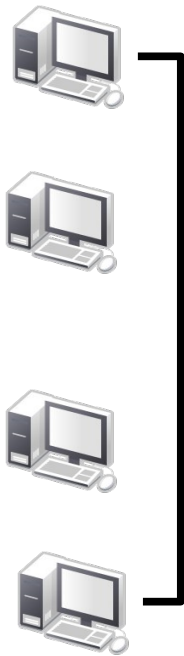
- Web and OS platform have known security issues
- New security flaws are identified and actively exploited on a daily basis
- Many security exploits take advantage of links to other applications on the server
- An effective secure access solution must limit exposure to security flaws by preventing access to vulnerable server processes



# Requires Resources To Implement

- Requires one or more public IP addresses for each service
- Should have a commercial security certificate for encrypted communication and to verify the authenticity of the web site
- May require the creation and maintenance of login accounts for authorized users
- Often requires additional public IP addresses and commercial certificates for each additional service
- An effective secure access solution will simplify the resource requirements for creating and maintaining public access to web-based services

**Internet Clients**



**STI iNOW**

Social Security  
Numbers &  
Home Addresses



**STI SETS Web**

Personal &  
Confidential  
Information



**Unprotected Server**

School Financial  
Records



THE SOLUTION



# Secure Access – Anytime, Anywhere

Syndesi Solutions offers a secure access solution for the Alabama Student Information System.

- Removes direct access to systems holding confidential student information
- Limits exposure to security issues for web-based applications
- Dramatically reduces resource requirements to implement secure, web-based applications





# Removes Direct Access

- Public connection takes place through a gateway that holds no user or application information
- Authentication takes place on a separate device with no direct Internet connection
- Can be used for both Internet and Intranet connections
- Can be configured with both authenticated and unauthenticated connections

# Limits Exposure To Security Issues

- Only allows access to the specific IP addresses and protocol ports configured at the gateway
- Will not allow redirection to unauthorized applications or web locations on the web application server

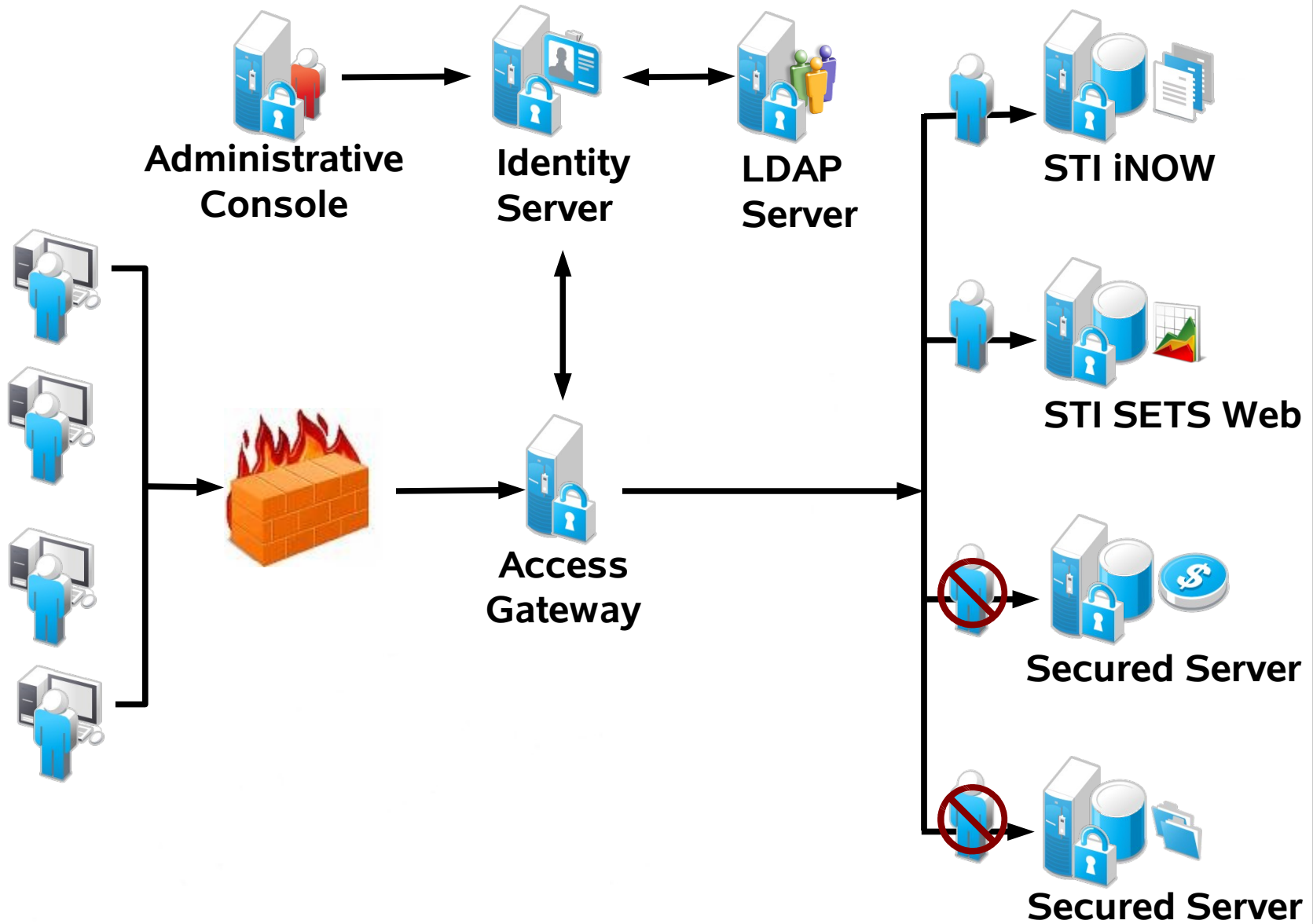




# Slashes Resource Requirements

- Reduces the requirement for number of public IP address and commercial certificates.
- Provides authenticated, secure connections to web applications without the need to set up encryption and security certificates on every server
- Access authentication integrates with existing user login environments, including Active Directory, eDirectory and LDAP
- Scalability from single site to enterprise level services
- Single point of administration

Internet Clients



A large teal circle is centered on a white background. Inside the circle, the word "DEMO" is written in a bold, white, sans-serif font. The letters have a slight drop shadow, making them stand out against the teal background.

**DEMO**

# Enhanced Functions



- Web Access Management – Simplified Web SSO
- Access Management for Enterprise Applications
- Fine-grained Access to J2EE Applications
- Support for SAML and Liberty Alliance Identity Federation
- Support for WS-Federation Identity Federation Standard
- Single Administration Tool

# Enhanced Functions

## Continued



- Group Management of Access Gateways
- Delegated Administration
- SSL VPN Desktop Clean-up and Secure Folder
- No Access Gateway Requirement for SSL VPN
- SSL VPN Client Integrity-based Access
- Application Programming Interfaces for Authentication and Identity Injection
- Application Programming Interfaces for Authorization



# Thank you !

---

Paul Gibbs – Director, Engineering Services  
pgibbs@syndesisolutions.com

Lori Clark – Account Manager  
lclark@switchdesk.com

256.867.4135

